

On Exhibit from August 15 - September 15, 2012:

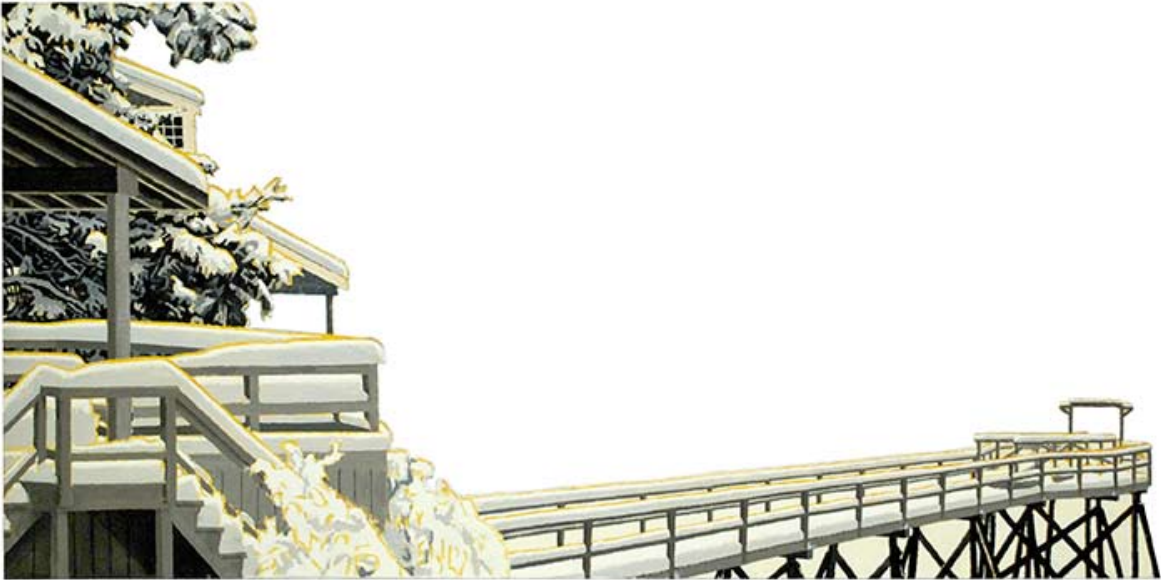
SAM CADY Paintings, Prints, and Drawings
DAVID DEWEY New Work - Collage & Watercolor
NANCY WISSEMAN-WIDRIG Preview
JOHN SILVERIO Recent Paintings

GREAT BASIN, KATAHDIN, 2010
oil on cutout canvas mounted on wood 10 x 26 1/2 inches Cady

CALDBECK GALLERY

12 Elm St Rockland Maine 04841 207.594.5935 www.caldbeck.com caldbeck@midcoast.com

Hours : Tuesday - Saturday 11-4, Sunday 1-4



In “Paintings, Prints, and Drawings”, Cady brings together a selection of works dating from 1982 (“Mobile Home, End View” oil on shaped canvas) to 2012 (“Gull View, Sand and Little Sand, After a Snow” oil on cut out canvas). Other works include 3 oils about Mount Katahdin, the largest being “Katahdin, South Basin, Chimney Pond to Knife Edge”, measuring 75 x 68 inches. Moving between the extremes of ‘trompe l’oeuil’ and abstraction, Cady is nationally known for his shaped canvases of both rural and urban landscape. The artist makes icons of the man made and the natural, and gives the viewer the world from an acute perspective. Solo exhibitions include the Mary Ryan Gallery in NYC, Howard Yezerski Gallery in Boston, Fujii Gallery in Tokyo, Japan, Castelli/Goodman/Solomon Gallery in East Hampton, NY and the Caldbeck Gallery. Other selected exhibits include The Butler Institute of American Art, and the Biennial of The Whitney Museum of Art. Collectors of his work include the Addison Gallery of American Art, Chase Manhattan Bank, Chemical Bank, the DeCordova Museum, the Farnsworth Art Museum, Fidelity Investments, IBM, Peabody-Essex Museum, the Portland Museum of Art, and Prudential Insurance, to name just a few. This is Cady’s 8th solo show with the Caldbeck, where he has shown since 1997.

SUMMER COTTAGE PORCHES AND DOCK AFTER A HEAVY SNOW, 2008-2009
oil on cutout canvas mounted on stainless steel 16 1/2 x 33 1/2 inches Cady



FRIENDSHIP SLOOP ECHO, CABIN WITH BLACK SAIL COVER, 2009
oil on shaped canvas 38 x 50 inches Cady



BRIDGES/CRANES, PORTLAND WATERFRONT (HOMAGE TO DECHIRICO), 2012
oil on cutout canvas mounted on wood 14 x 21 inches Cady



GULL VIEW, SAND AND LITTLE SAND AFTER A SNOW, LOW TIDE, 2012
oil on cutout canvas mounted on wood 14 1/2 x 47 1/2 inches Cady



Nancy Wissemann-Widrig's recent work further explores relationships in her family and between her paintings. These works are like painted collages – bits and pieces of her life, as well as images borrowed from her paintings, come together again on a new canvas. Those who know her work will recognize the references to earlier paintings; those who don't might want to know more about the story behind the images, or will bring their own stories to the paintings. The selected works for this show are oil on canvas, measuring in the range of 24 x 36 inches to 32 x 46 inches. In Maine, her work is in the permanent collections of the Farnsworth Art Museum and the Portland Museum of Art; other collections include the Canton Art Institute in Ohio, the University of Kansas Museum of Art, and the University of Tulsa, OK. Dividing her time between Southold out on Long Island NY, and Cushing, Maine, the artist also fuels her imagination with tropical images from the island of Culebra where she and artist husband, John Wissemann, have spent many winters, hard at work. Working with the gallery since 1993, this is Wissemann-Widrig's 7th solo exhibit.



AUGUST, 2011 oil on canvas 32 x 46 inches Wissenmann-Widrig



ICONS, 2011 oil on canvas 11 x 14 inches Wisemann-Widrig



LILIES, LUPINES, 2011 oil on canvas 11 x 14 inches Wissemann-Widrig



David Dewey's new work focuses on collages made from digital prints of his gouaches and watercolors, pieced together with dissected paintings, and then further embellished with in-painting in gouache. In this exhibit, there will be a dozen collages, measuring from 6 x 8 inches to 6 x 14 inches, and a large watercolor, "Moon Glow", measuring 34 x 46 inches, which the artist had started in 2009, and after putting it away for two years, brought it to completion this past winter. Susan Larsen, former curator at the Whitney Museum of American Art and the Farnsworth Museum of Art, wrote of Dewey, "Order and life, then and now, mastery and risk, all enliven and balance one another". Dewey is the author of *THE WATERCOLOR BOOK* published by Watson-Guption Publishers in 1995. His paintings are in collections around the country, including Bowdoin College Museum in Brunswick, ME, Frye Art Museum in Seattle, WA, The Farnsworth Art Museum in Rockland, ME, Newport Art Museum in Newport, RI, The Portland Museum of Art in Portland, ME and Rider University in Lawrenceville, NJ. He has been showing with the Caldbeck since 2004 and has had 4 solo shows since then.

MOORING, 2011 collage and gouache 6 x 14 1/2 inches Dewey



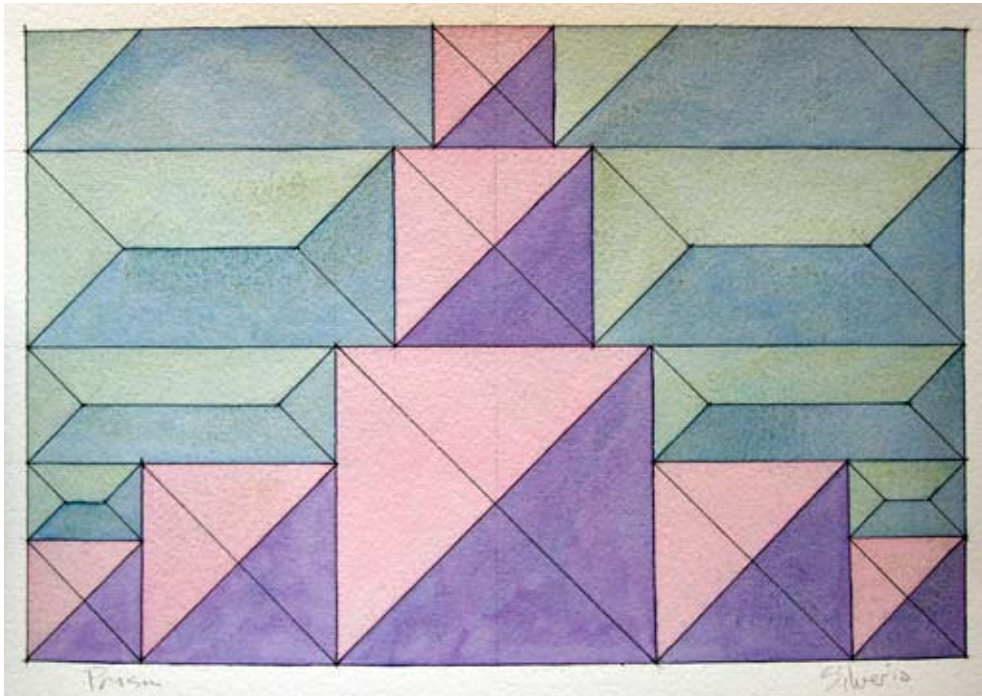
PINK SUNSET, 2010 collage & gouache 5 x 7 inches Dewey



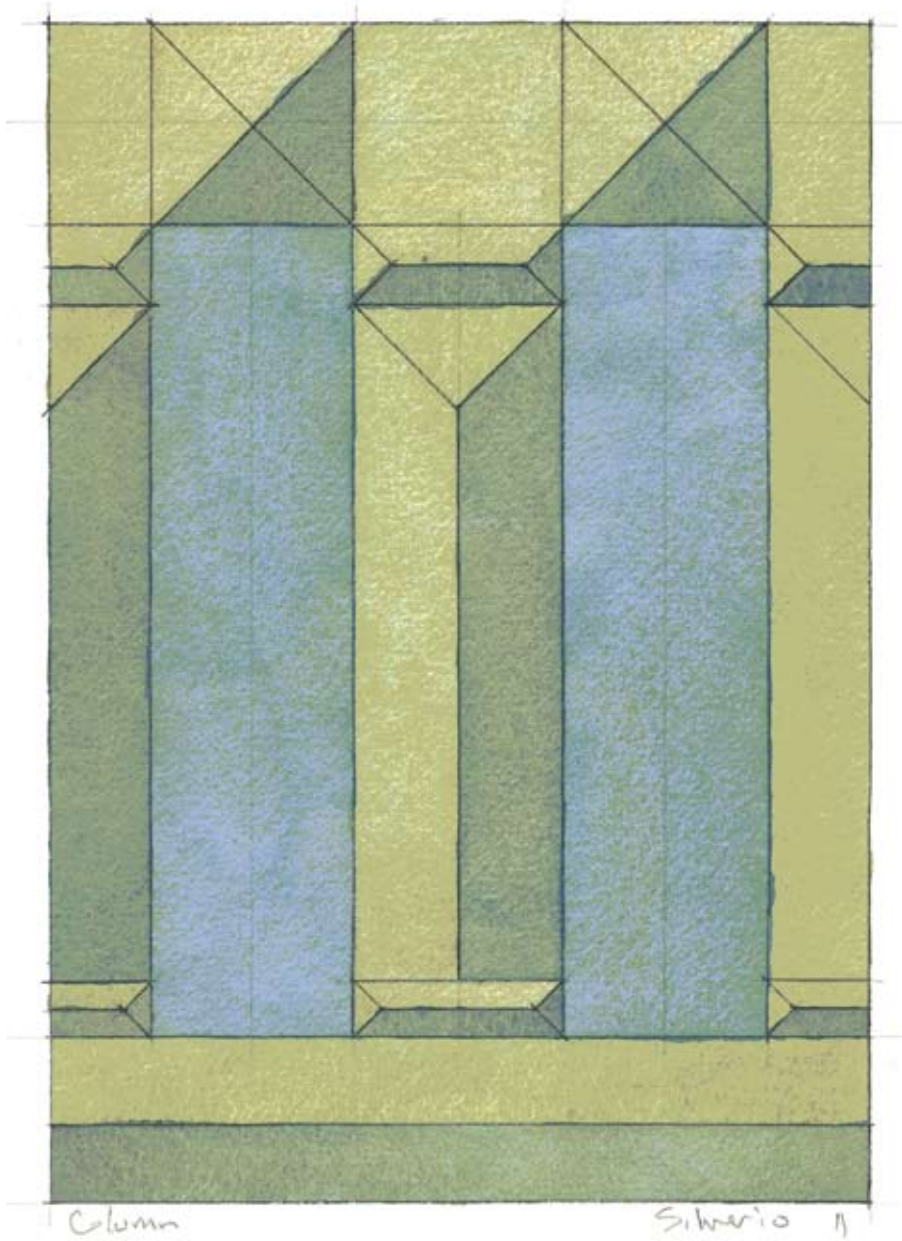
MOONRISE TIDE, 2010 collage & gouache 5 x 7 inches Dewey



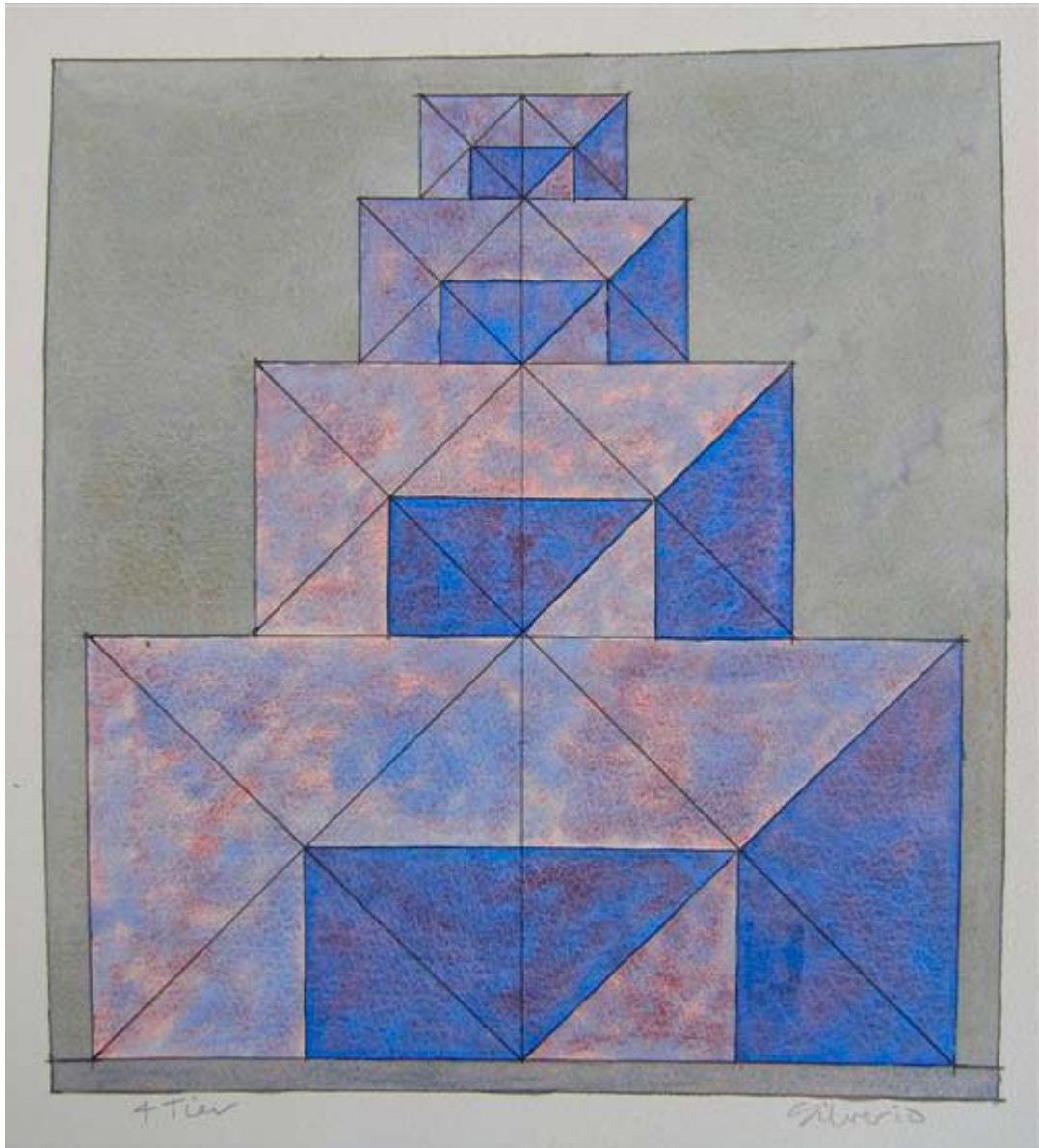
MOON AND PINK CLOUD, 2010 collage & gouache 5 x 7 inches Dewey



John Silverio's new paintings and drawings in watercolor on paper employ shapes derived from roof and pyramid forms. For the artist, these architectural symbols provide a vehicle with which to explore form, shadow, and color in a very direct way, using the compositional progressions of the Fibonacci Series and the Golden Mean. The surfaces of the watercolors are deeply granulated, thus enriching the luminosity of the color. Though he has painted and drawn throughout his life, Silverio is well known and celebrated as a practicing architect in Maine and beyond. He studied architecture at Rhode Island School of Design, participating in the European Honors Program in Rome, and he also studied with Louis Kahn at the University of Pennsylvania. His work has been shown at the University of Maine, the College of the Atlantic, Openspace Gallery, Pine Tree Shop Gallery, and Aarhus Gallery. An exhibition of the architectural watercolors is scheduled for the fall of 2012 at Unity College. He is also the author of three books on architecture: *RADIENCE*, *INDWELLING*, *HEARTHSPIRE*, and *THE BOOK OF THE HUT*. This is the artist's first exhibit with the Caldbeck.



COLUMN, 2011 watercolor on paper 12 x 8 inches Silverio



4 TIER, 2012 watercolor on paper 12 x 11 inches Silverio